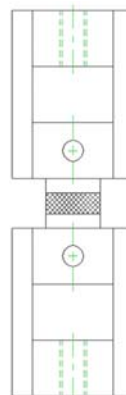


# **FLATWISE TENSION FIXTURE WITH 5 SETS OF 1" SQUARE BONDING BLOCKS (TYPE B)**



Specimen	Width	1"
	Thickness	Up to 1" (+)
	Length	1"
Fixture	Construction	Stainless steel with aluminum bonding blocks
	Temperature	-20 to 120°F (-29 to 49°C)
	Mounting	Thread 1/2"-20 threaded couplings
	Capacity	2,000 lbs (9 kN)
	Weight	7 lbs approximately
	Dimensions	Assembled 2.25" x 1.5" x 7"
	Standard	Manufactured in accordance with ASTM D1623

Model No. ASTM.D1623.20 - Flatwise Tension Fixture with Five Sets of 1" Square Bonding Blocks. Universal joint type fixture constructed from stainless steel in accordance with ASTM D1623. The five sets of bonding blocks are constructed from aluminum with a protective black anodized finish and have one machined bonding surface. Supplied with (2) 1/2"-20 threaded couplings.