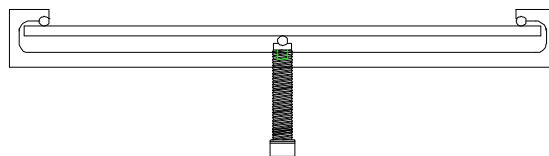
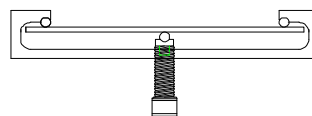


BENT-BEAM STRESS-CORROSION FIXTURE



<u>Model No.</u>	<u>Specimen Size or Difference Between Fixtures</u>	<u>Construction</u>	<u>Temperature</u>
ASTM.G0039.13	Two point	Stainless steel	-240 to 600°F (-152 to 318°C)
ASTM.G0039.23	Three point	Stainless steel	-240 to 600°F (-152 to 318°C)
ASTM.D3929.10	Three point	Stainless steel	-240 to 600°F (-152 to 318°C)
ASTM.G0039.33	Four point	Stainless steel	-240 to 600°F (-152 to 318°C)

Fixture:	Width	1" wide
	Length	7" long
	Thickness	1/8" thick
	Mounting	Table top
	Capacity	2,000 lbs
	Weight	5 lbs
	Dimensions	8" wide by 1" deep by 3" tall
	Standard	Manufactured in compliance with ASTM G39

QUOTE

Model No. ASTM.G0039.13 - Two Point Stress Corrosion Fixture

The fixture consists of a flat retention plate with fixed specimen loading table. The fixed distance between the tabs is determined by the specimen configuration and required stress. Accommodates specimens that measure 7" long by 1" wide and 1/8" thick. Constructed of stainless steel. Manufactured in compliance with ASTM G39.

Model No. ASTM.G0039.23 - Three Point Stress Corrosion Fixture

The fixture consists of a claw shaped retention frame that provides the two outer most support points. These points are radiused directly into the frame. The three point loading pin is supported and moved by a threaded loading stud. Accommodates specimens that measure 7" long by up to 1" wide and 1/8" thick. Constructed of stainless steel. Manufactured in compliance with ASTM D3929 and G39.

Model No. ASTM.G0039.33 - Four Point Stress Corrosion Fixture

The fixture consists of a claw shaped retention frame that provides the two outer most support points. These points are radiused directly into the frame. The four point loading head with fixed radiused loading points is supported and moved by a threaded loading stud. Accommodates specimens that measure 7" long by 1" wide and 1/8" thick. Constructed of stainless steel. Manufactured in compliance with ASTM G39.

ACCESSORIES

Model No. ACC.G0039.0010 - Deflection Gauge and Loading Block

For use with any of the above fixtures, this gauge measures the deflection of the specimen.

SPARE PARTS

Please contact us for other size fixtures not listed

COMMON SIZE ADAPTERS

No common size adapters needed for this fixture

EXTRA PHOTOS:

