

Standards:

ASTM C297 - 16
ASTM D952 - 02
ASTM D1623 - 21 TYPE B & C
ASTM F521 - 22
MIL-STD-401B - 67

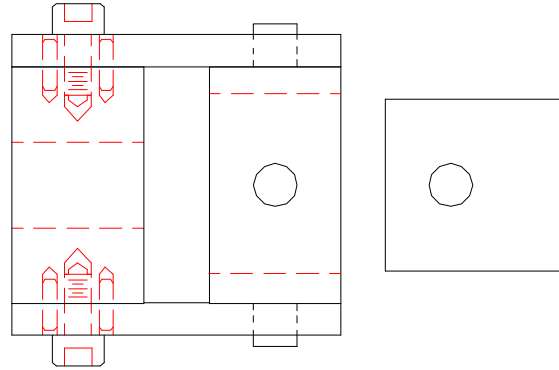
Material Type:

ADHESIVE

Type of Testing:

TENSILE

FLATWISE TENSION FIXTURE (SS) WITH 5 SETS OF 2" SQUARE (AL) BONDING BLOCKS - UNIVERSAL JOINT TYPE



Model No.

ASTM.C0297.11
ASTM.C0481.21
ASTM.D1623.30
AITM.10025.10
MILS.00401.51

Specimen Size or Difference Between Fixtures

2" Wide and 2" Length
2" Wide and 2" Length
2" Wide and 2" Length
2" Wide and 2" Length
2" Wide and 2" Length

Construction

Stainless steel and aluminium
Stainless steel and aluminium
Stainless steel and aluminium
Stainless steel and aluminium
Stainless steel and aluminium

Temperature

-120 to 250°F (-85 to 122°C)
-120 to 250°F (-85 to 122°C)
-120 to 250°F (-85 to 122°C)
-120 to 250°F (-85 to 122°C)
-120 to 250°F (-85 to 122°C)

ASTM.C0297.13
ASTM.C0481.23

3" wide and 3" length
3" wide and 3" length

Stainless steel and aluminium
Stainless steel and aluminium

-120 to 250°F (-85 to 122°C)
-120 to 250°F (-85 to 122°C)

ASTM.F0521.10
ASTM.D0952.10

2" Wide and 2" Length
2" Wide and 2" Length

Stainless steel and ANSI B1.1
AL
Stainless steel and ANSI B1.1
AL

-120 to 250°F (-85 to 122°C)
-120 to 250°F (-85 to 122°C)

Fixture:	Mounting	1"-14 threaded couplings
	Capacity	20,000 lbs (88.9 kN)
	Weight	45 lbs approximately
	Dimensions	Assembled 4" x 4" x 10"
	Bonding	Supplied with 5 sets of aluminum bonding blocks
	Standard	Manufactured in compliance with ASTM C297, C481, D952, D1623, F521, AITM 1.0025 and MIL-STD-401B

QUOTE

Model No. ASTM.C0297.11 - Flatwise Tension Fixture with 5 Sets of 2" Square Blocks

Universal joint type fixture comes with 1"-14 threaded couplings for mounting to your test machine. Constructed from stainless steel except for the five sets of bonding blocks which are constructed from aluminum with a protective black anodizing coating. Fixture is manufactured in compliance with ASTM C297, C481, D952, D1623, F521, AITM 1.0025 and MIL-STD-401B.

Model No. ASTM.C0297.13 - Flatwise Tension Fixture with 5 Sets of 3" Square Blocks

Universal joint type fixture comes with 1"-14 threaded couplings for mounting to your test machine. Bonding blocks step from 3" to 2" square to fit in fixture. the 3" square end of each bonding block has a machined bonding surface. Constructed from stainless steel except for the five sets of bonding blocks which are constructed from aluminum with a protective black anodizing coating. Fixture is manufactured in compliance with ASTM C297 and C481.

ACCESSORIES

Model No. ACC.C0297.1102 - Set of (2) 2" Square High Strength Steel with Black Oxide Bonding Blocks

Model No. ACC.C0297.1103 - Set of (2) 2" Square Stainless Steel Bonding Blocks

Model No. ACC.C0297.1104 - Set of (2) Metric Version Square Aluminum Bonding Blocks

Model No. ACC.C0297.1105 - Set of (2) Metric Version Square Stainless Steel Bonding Blocks

SPARE PARTS

Model No. SPA.C0297.1101 - Extra swivel

Model No. SPA.C0297.1102 - Set of (2) 2" Square Aluminum Bonding Blocks

Bonding blocks come with 1/2" diameter hole. Blocks include a protective black anodized coating with a flat machined bonding surface. Bonding blocks are constructed in accordance with ASTM C297.

Model No. SPA.C0297.1103 - Extra Set of (2) Loading Pins

Model No. SPA.C0297.1301 - Extra Set of (2) 3" Square Aluminum Bonding Blocks

Bonding blocks step from 3" to 2" square to fit in fixture. the 3" square end of each bonding block has a machined bonding surface.

COMMON SIZE ADAPTERS

Upper and Lower Mounting: 1"-14 Female Coupling

Model No. M03S36 - 1.25" Male Clevis to 1" -14 Threaded Stud

Model No. S42S36 - 1.25" -12 to 1" -14 Threaded Step Stud

Model No. S48S36 - 1.5" -12 to 1" -14 Threaded Step Stud

Model No. S60S36 - 2" -12 to 1" -14 Threaded Step Stud

Model No. LN36 - 1" -14 Threaded Locking Nut with Knurled OD

EXTRA PHOTOS:

